

---

**MERLO SEAFOOD**

---

## **PRODUCTS 2009**

### **Merlo Seafood**

Thykkvabaer 4

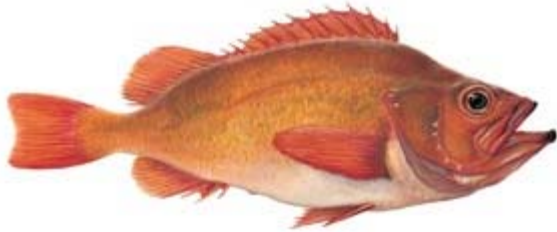
110 Reykjavik - Iceland

Tel: +354 820 4311

Fax: +354 567 5311

E-mail: [magnus@merlo.is](mailto:magnus@merlo.is)

# Sea frozen



Product: Redfish J-cut (headed and gutted), frozen at sea  
Latin name: Sebastes marinus (Orange)  
Packing: 3x7 kg., 58 cases per pallet = 1.218 kg/pallet  
Loading: 20 pallets in 40" container = 24.360 kg  
Sizes: 100/200, 200/300, 300/500, 500/700, 700+, 1000 gr.+

Product: Redfish J-cut (headed and gutted), frozen at sea  
Latin name: Sebastes marinus (Orange)  
Packing: 1x22 kg., vertical frozen.  
Loading: 20 pallets in 40" container  
Sizes: 100/200, 200/300, 300/500, 500/700, 700+, 1000 gr.+



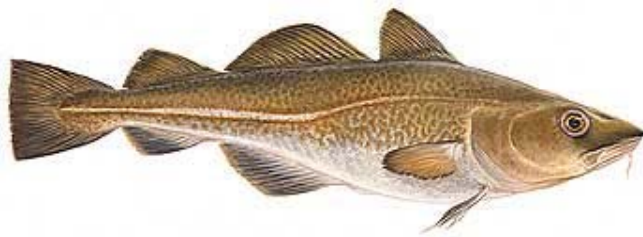
Product: Redfish J-cut (headed and gutted), frozen at sea  
Latin name: Sebastes mentella (Red)  
Packing: 3x7 kg., 58 cases per pallet = 1.218 kg/pallet  
Loading: 20 pallets in 40" container = 24.360 kg  
Sizes: 100/200, 200/300, 300/500, 500/700, 700+, 1000 gr.+



Product: Saithe fillets skinless, pbi and pbo, interl., frozen at sea  
Latin name: Pollachius virens  
Packing: 3x9 kg., 45 cases per pallet = 1.215 kg/pallet  
Loding: 20 pallets in 40" container = 24.300 kg  
Sizes: 5/8 , 8/16, 16/32 ans 32oz.+



Product: Haddock fillets, s/l, pbi and pbo, interl, frozen at sea  
Latin name: *Melanogrammus aeglefinus*  
Packing: 3x9 kg., 45 cs per pallets = 1.215 kg/pallet  
Loading: 20 pallets in 40" container = 24.300 kg.  
Sizes: 3/5, 5/8, 8/16, 16/32 and 32oz.



Product: Cod fillets, s/l, pbi and pbo, interleaved, frozen at sea  
Latin name: *Gadus morhua*  
Packing: 3x9 kg., 45 cs per pallets = 1.215 kg/pallet  
Loading: 20 pallets in 40" container = 24.300 kg  
Sizes: 5/8, 8/16, 16/32 and 32oz.+

Product: Cod fillets, skin-on, pbi, shatterpacked, frozen at sea  
Latin name: *Gadus morhua*  
Packing: 2x13 kg.  
Sizes: 900/1400, 1400+ gr.



Product: Silver smeltedfish H/G (headed and gutted), frozen at sea  
Latin name: Argentina silus  
Packing: 3x7 kg., 58 cases per pallet = 1.218 kg/pallet  
Loading: 20 pallets in 40" container = 24.360 kg.  
Sizes: Mix – one size only

# Landfrozen



Product: Catfish fillets s/l, pbi, interleaved, 4x6 kg, landfrozen

Latin name: Anarhichas lupus

Packing: 4x6 kg., 50 cases per pallet = 1.200 kg/pallet

Loading: 20 pallets in 40" container = 24.000 kg

Sizes: 100/400, 400/800 and 800 gr.+

Product: Catfish loins, s/l, pbo, , 5% glaze, landfrozen

Latin name: Anarhichas lupus

Packing: 500 kg bulk

Sizes: 100/400 gr.

Product: Catfish fillets s/l, pbi, IQF, 10% glaze, landfrozen

Latin name: Anarhichas lupus

Packing: 1x5, 1x20 and 1x450 kg

Sizes: 100/400, 400/800 and 800 gr.

Product: Catfish portions s/l, pbi, 5% glaze compensated, landfrozen

Latin name: Anarhichas lupus

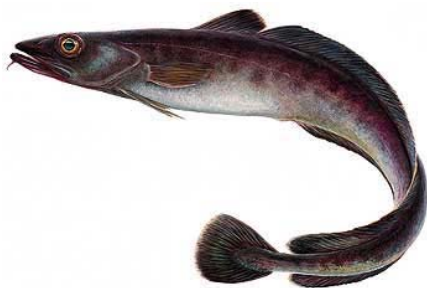
Packing: 500 kg bulk

Sizes: 100/400 gr.

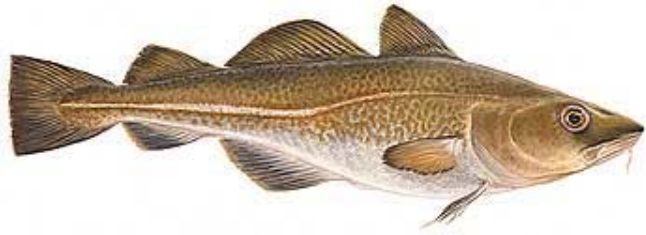


Product: Haddock fillets IQF  
Latin name: *Melanogrammus aeglefinus*  
Packing: 1x400 gr.  
Sizes: All sizes.

Product: Haddock Roe, industrial.  
Latin name: *Melanogrammus aeglefinus*  
Packing: 3x9 kg  
Sizes: All sizes.



Product: Blue ling fillets s/l, pbi, interleaved, 4x6 kg, landfrozen  
Latin name: *Molva dypterygia*  
Packing: 4x6 kg., 50 cases per pallet = 1.200 kg/pallet  
Loading: 20 pallets in 40" container = 24.000 kg.  
Sizes: 100/400, 400/800 and 800 gr.+



Product: Cod Roe, industrial

Latin name: *Gadus Morhua*

Packing: 3x9 kg

Product: Cod Roe, IQF, Glaze 5-7%

Latin name: *Gadus Morhua*

Sizes: 50/200, 200/400, 400/600, 600/800, 800+

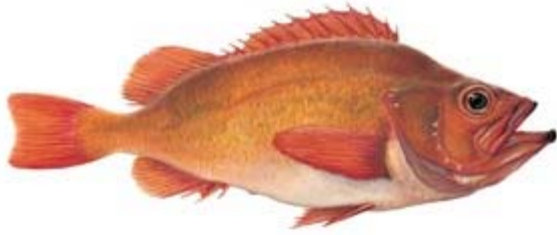


Product: Saithe Roe, industrial.

Latin name: *Pollachius virens*

Packing: 3x9 kg.





Product: Redfish fillets, s/l, pbi, interleaved

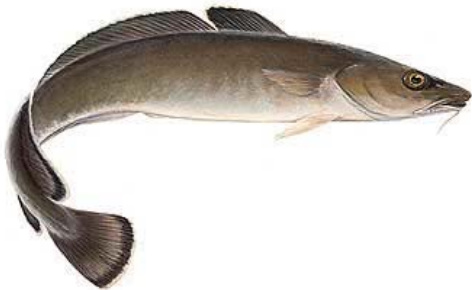
Latin name: Sebastes marinus (Orange)

Packing: 4x6 kg.

Product: Redfish fillets, s/l, pbi, IQF

Latin name: Sebastes marinus (Orange)

Packing: 4x6 kg.:



Product: Ling fillets s/l, pbi, interleaved, 4x6 kg, landfrozen

Latin name: Molva molva

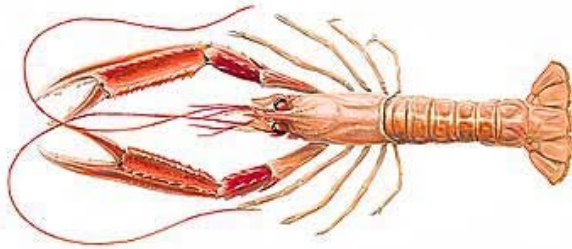
Packing: 4x6 kg., 50 cases per pallet = 1.200 kg/pallet

Loading: 20 pallets in 40" container = 24.000 kg

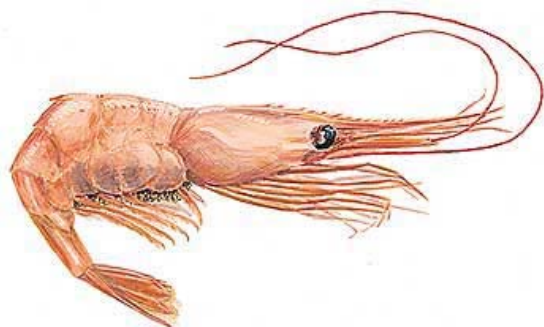
Sizes: 100/400, 400/800 and 800 gr.+



Product: White halibut, whole H/G, FAS and landfrozen  
Latin name: Hippoglossus hippoglossus  
Packing: Each fish IQF  
Loading: By pallets approx 700 – 1000 kg per pallet  
Sizes: From 2 kilos up to 150 kilos each fish.



Product: Scampi – Norwegian lobster, whole and tails  
Latin name: Nephrops norvegicus  
Packing: 1x1,5 kg., 280 cs per pallet = 420 kg per pallet  
Loading: 18 pallets in 40“ container = 7.560 kg  
Sizes: 000, 00, 0, 1, 2 and 3 for Whole Scampi  
8/12, 12/16, 16/20, 20/24, 24/30, 30/36 for tails



Product: Cooked and peeled shrimps double- and single frozen

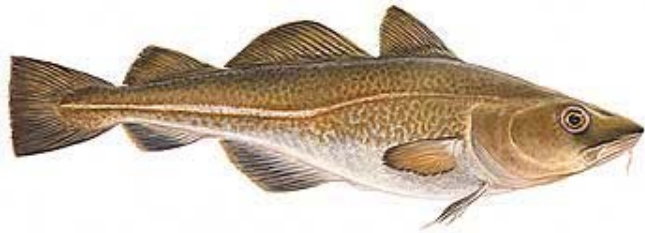
Latin name: *Pandalus borealis*

Packing: 4x2,5 kg., 1x10 kg., 104 cs per pallet = 1.040 kg per pallet

Loading: 20 pallets in 40" container = 20.800 kg

Sizes: U/150, 100/200, 150/250, 250/350, 300/500, 400/600, 500/800 and 800 +

# Salted



Product: IQF light salted cod fillets, landfrozen  
Latin name: Gadus morhua  
Packing: 1x11 kg., 96 cases per pallet = 1.056 kg/pallet  
Loading: 20 pallets in 40" container = 21.120 kg  
Sizes: 100/500, 500/1000 and 1000 gr.+

Product: Wet salted cod fillets  
Latin name: Gadus morhua  
Packing: 1x25 kg., 40 cases per pallet = 1.000 kg/pallet  
Loading: 20 pallets in 40" container = 20.000 kg.  
Sizes: 100/400, 400/700, 700/1000 and 1000 gr.+

Product: Wet salted cod splitted  
Latin name: Gadus morhua  
Packing: 1x25 kg., 40 cases per pallet = 1.000 kg/pallet  
Loading: 20 pallets in 40" container = 20.000 kg  
Sizes: 5/8, 8/12, 12/17, 17/27, 27/4000 and 4000 gr.+